



Edna Cassell

April 2, 1946 - August 5, 2016

Edna Vernell Cassell, 70, of Portsmouth, was called home to be with the Lord on Friday, August 5, 2016. She retired as a home healthcare nurse. Edna Cassell attended First Baptist Church Taylorsville. She volunteered at the Wesley Community Center for over forty years. Left to cherish her memory is her three daughters, Lynette T. Barnes, Lawanda Barnes and Edna Vernell Barnes; one son, Danny L. Barnes (LaTonya M.) ; ten grandchildren; eleven great grandchildren; adopted son, Prince Cobb , and a host of nieces, nephews, cousins and love ones.

Cemetery Details

Cassell Cuffee Demby Family Cemetery

Galberry Rd.
Chesapeake, Va

Previous Events

Visitation

AUG 10. 4:00 PM - 7:00 PM (ET)

J.T. Fisher Funeral Services
1248 N. George Washington Hwy.
Chesapeake, VA 23323
(757) 487-3700
info@jtfisherfuneralservices.com
<https://www.jtfisherfuneralservices.com>

Service

AUG 11. 12:00 PM (ET)

Wesley Community Service Center
1701 Elm Avenue Portsmouth, VA

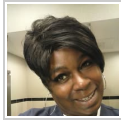
Tribute Wall



“ *J.T. Fisher Funeral Services created a Tribute Video in memory of Edna Cassell*

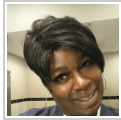


J. T. Fisher Funeral Services - August 10, 2016 at 03:04 PM



Love you Mommy

Lawanda Barnes - April 17, 2019 at 12:20 AM



I'm missing you

Lawanda Barnes - April 17, 2019 at 12:27 AM



“ *You have our prayers and our deepest condolences in the loss of this great woman and matriarch of the family of the Cassell's, Barns family, be encourage be healed and be blessed, Elder Derek L. Roberson and family.*



Derek L. Roberson Sr. - August 10, 2016 at 07:08 PM



“ 28 files added to the album Life Tributes



J. T. Fisher Funeral Services - August 10, 2016 at 10:24 AM



*To: Lynnette Barnes and her family I offer my deepest condolences,
Love you ,Willie Mae Crawford*

Willie Mae Crawford - August 10, 2016 at 11:47 AM



*To Lynette and family, may god bless and keep you in prayer for the
days ahead. You have my deepest sympathy.*

Tanya Boddie

Tanya Boddie - August 10, 2016 at 05:52 PM